

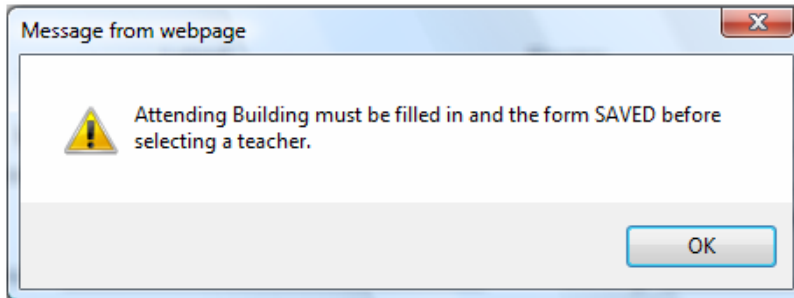
Consent for Evaluation / Reevaluation

Recent Changes

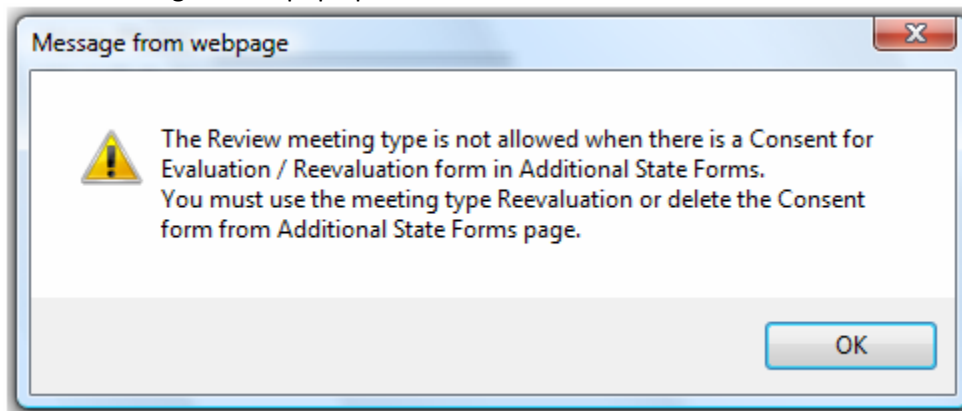
10/8/2009

Several changes have been made recently to the Consent for Evaluation / Reevaluation:

1. Before the 'Teacher / Service Provider:' can be selected, the Attending District and Building information must be entered. The Attending Building is used to filter the lookup "Building" list accessed by the 'B' button next to Teacher / Service Provider. When the Attending Building is blank, the message shown below will pop up.



2. The 'Date:' field in the upper right corner of the 'Consent' is no longer defaulted from the 'Date:' field on Page A of the IEP. The 'Consent' date is blank and must be entered by the user.
3. The 'Additional Forms' menu will not allow the 'Consent for Evaluation' form to be selected when the 'IEP Meeting Type' on Page A is 'Review'. This restriction was in place for Version 5 and was somehow lost in the rollover to Version 2009. The restriction has been restored.
4. If a user selects 'Reevaluation' as the 'IEP Meeting Type' on Page A, then creates a 'Consent for Reevaluation' and then tries to change the 'IEP Meeting Type' on Page A to 'Review', they will see the message below pop up:



Either the 'Consent' must be deleted or the 'IEP Meeting Type' on Page A must remain 'Reevaluation'.